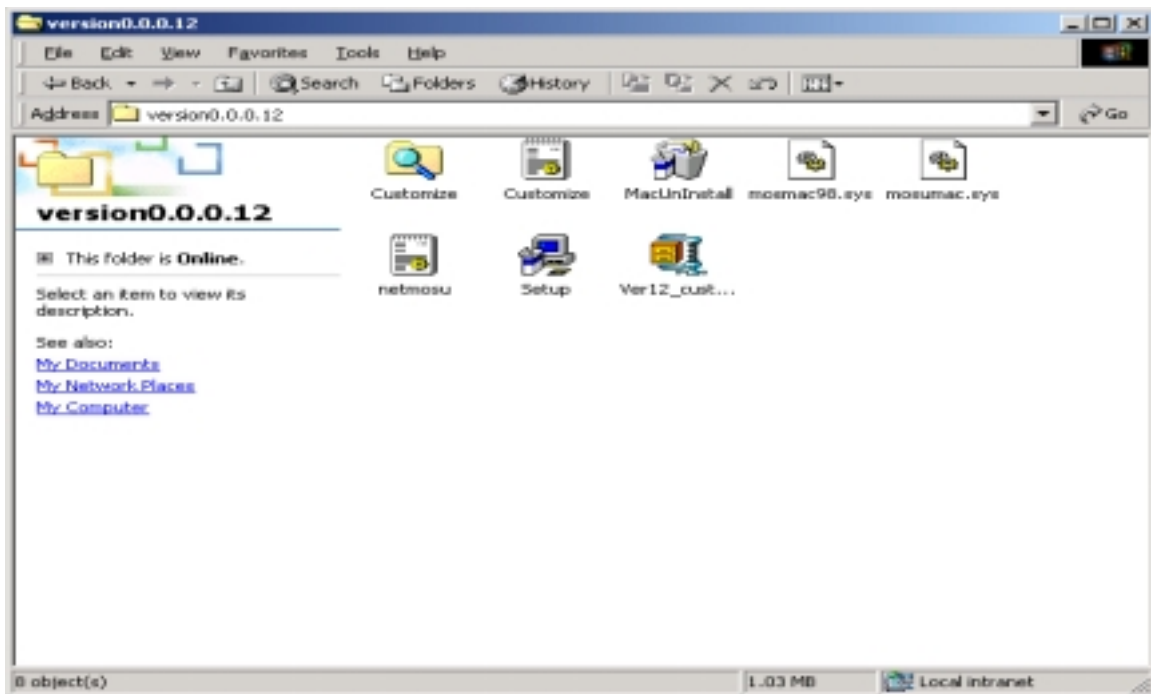
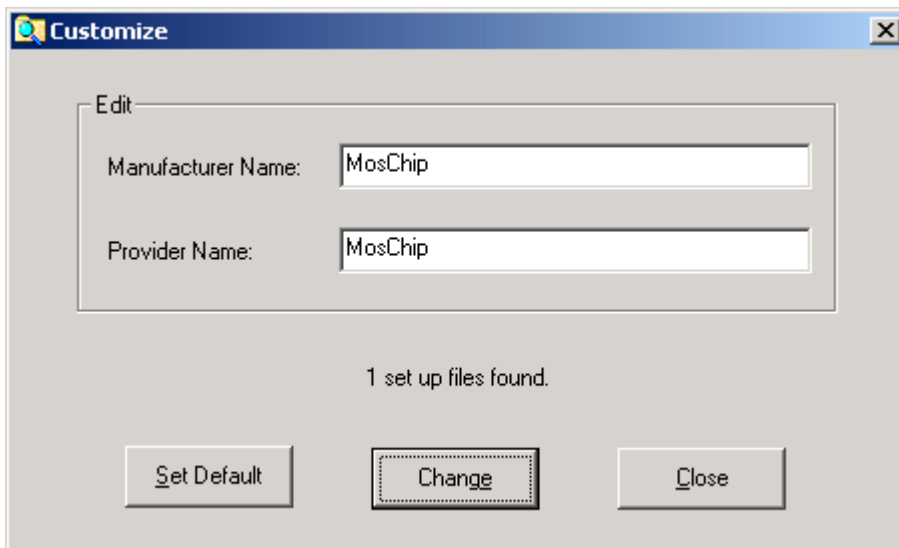


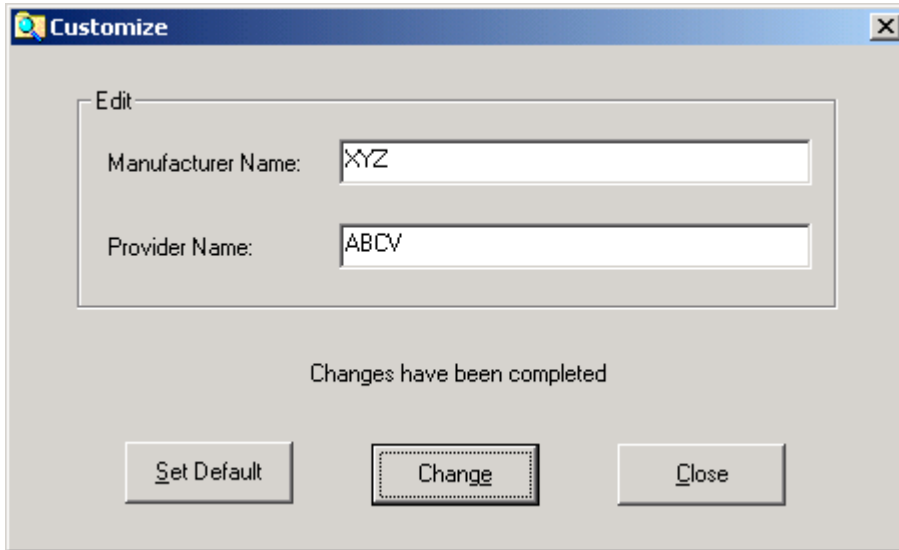
1. Copy the zip file onto your PC & unzip contents onto a new folder
2. You would find following contents in the new folder



- 2 Double click on Customize application to following screen



3 Change Manufac'r , Provider's name as required by you & click Change button



4 Click on Close button, to close the window

5 Now run the Un-install application from above driver folder

6. Run setup.exe to install customized drivers .

You need to repeat above steps incase you want to change the details again.

Note : There is no change in installation instructions, you can continue to use existing Ones.

7) **Follow the instructions as stated below to while making the driver disk for delivering to End-customer (i.e. Without customize, Debug support & Mass production utilities)**

To remove Customize feature :

- a. Make changes as required by you by using the Customize application.
- b. Delete **Customize application**, **Customize.ini** file from the driver disk of MCS7830.

To remove Mass production tool:

- a. Remove DiagnoseEthernet, Epromprogramming applications from MCS7830 driver disk.